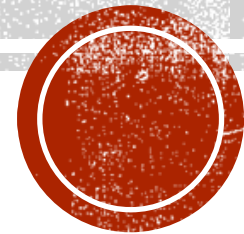


BACK-TO-SCHOOL PLAN

Lake Preston School District

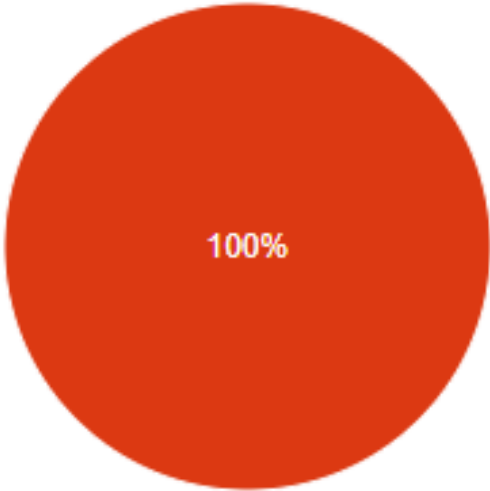
2020-2021



STAFF SURVEY RESULTS

Is there any chance, due to health concerns or limitations, you will not be able to return to school full-time in August?

26 responses



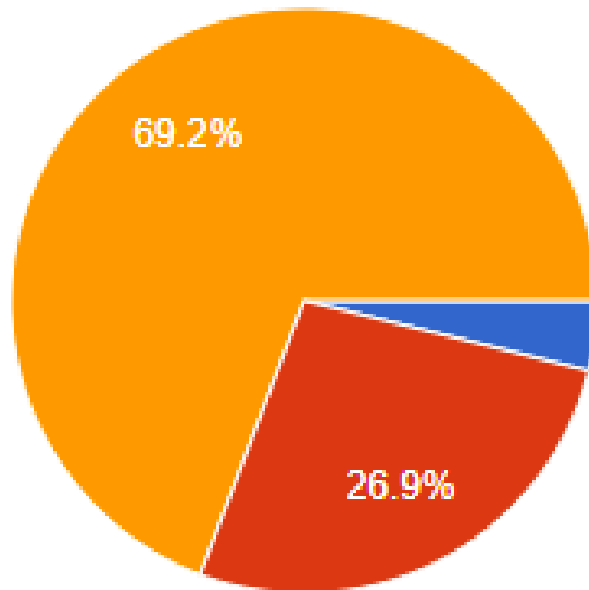
- Yes
- No
- Maybe



STAFF SURVEY RESULTS

Do you feel a mask policy should be implemented in school?

26 responses



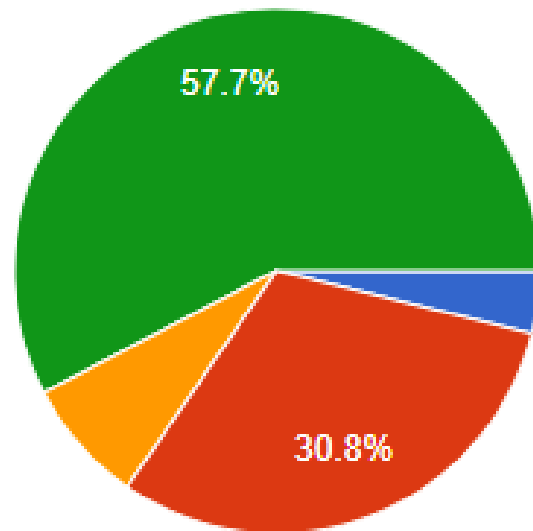
- Yes, for teachers and staff only.
- Yes, for teachers, staff, and students.
- No, only for those who choose to wear them.



STAFF SURVEY RESULTS

If the virus stays at current levels or gets worse, what do you feel should be the format of school?

26 responses



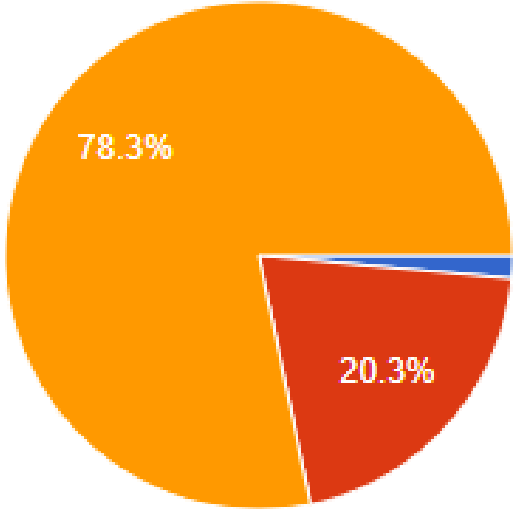
- Students should go to school and everything should continue as normal.
- Students should go to school and we should implement as many social distancing rules as possible.
- We should implement distance learning and not risk exposing our school.
- We should have in-building education along with distance learning for those parents/students that do not feel comfortable.



PARENT SURVEY RESULTS

Do you feel a mask policy should be implemented in school?

69 responses



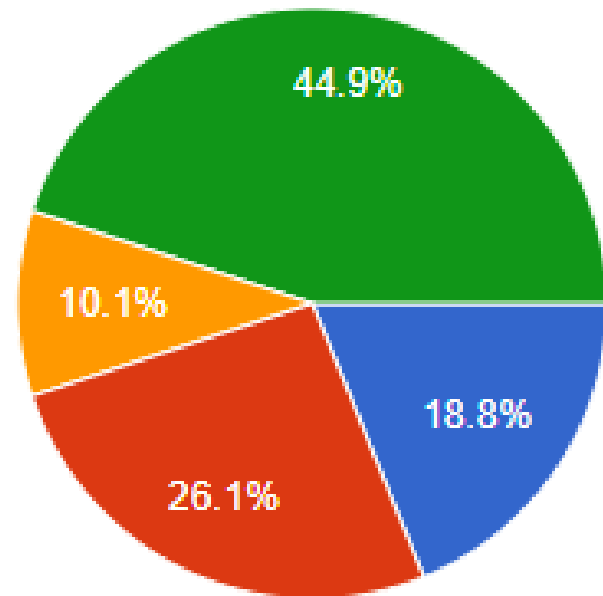
- Yes, for teachers and staff only.
- Yes, for teachers, staff, and students.
- No, only for those who choose to wear them.



PARENT SURVEY RESULTS

If the virus stays at current levels or gets worse, what do you feel should be the format of school?

69 responses



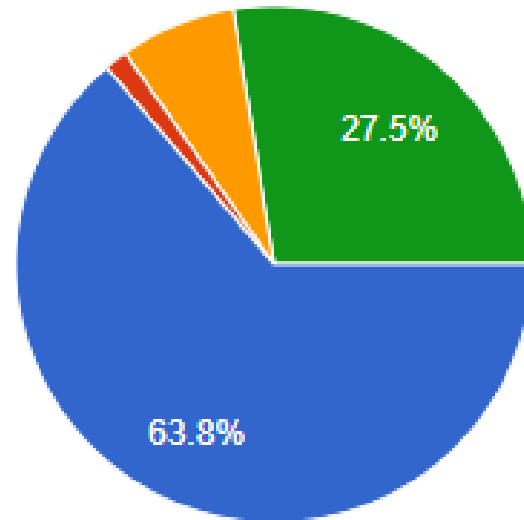
- Students should go to school and everything should continue as normal.
- Students should go to school and we should implement as many social distancing rules as possible.
- We should implement distance learning and not risk exposing our school.
- We should have in-building education along with distance learning for those parents/students that do not feel comfortable.



PARENT SURVEY RESULTS

Are you planning to have your student attend school in-person this fall?

69 responses



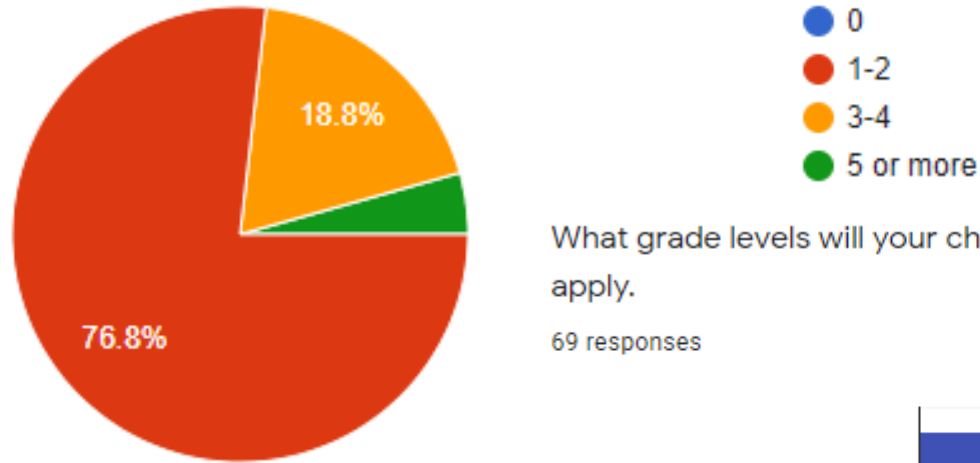
- Yes, I want and/or need my student(s) to be at school.
- No, I would prefer to keep my children home and use distance learning.
- I am not sure yet.
- I will likely be comfortable with whatever the school district decides.



PARENT SURVEY RESULTS

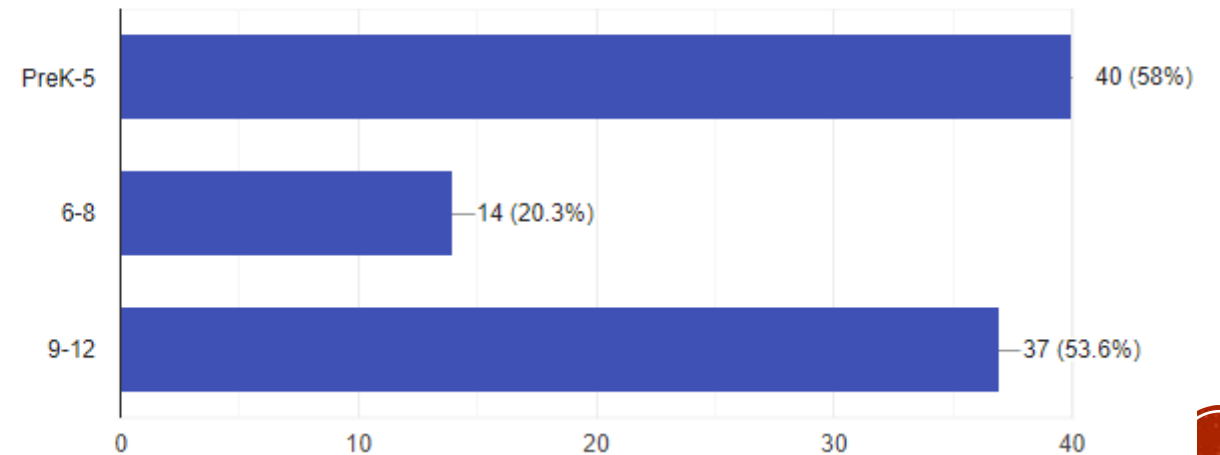
How many students do you have that attend Lake Preston School?

69 responses



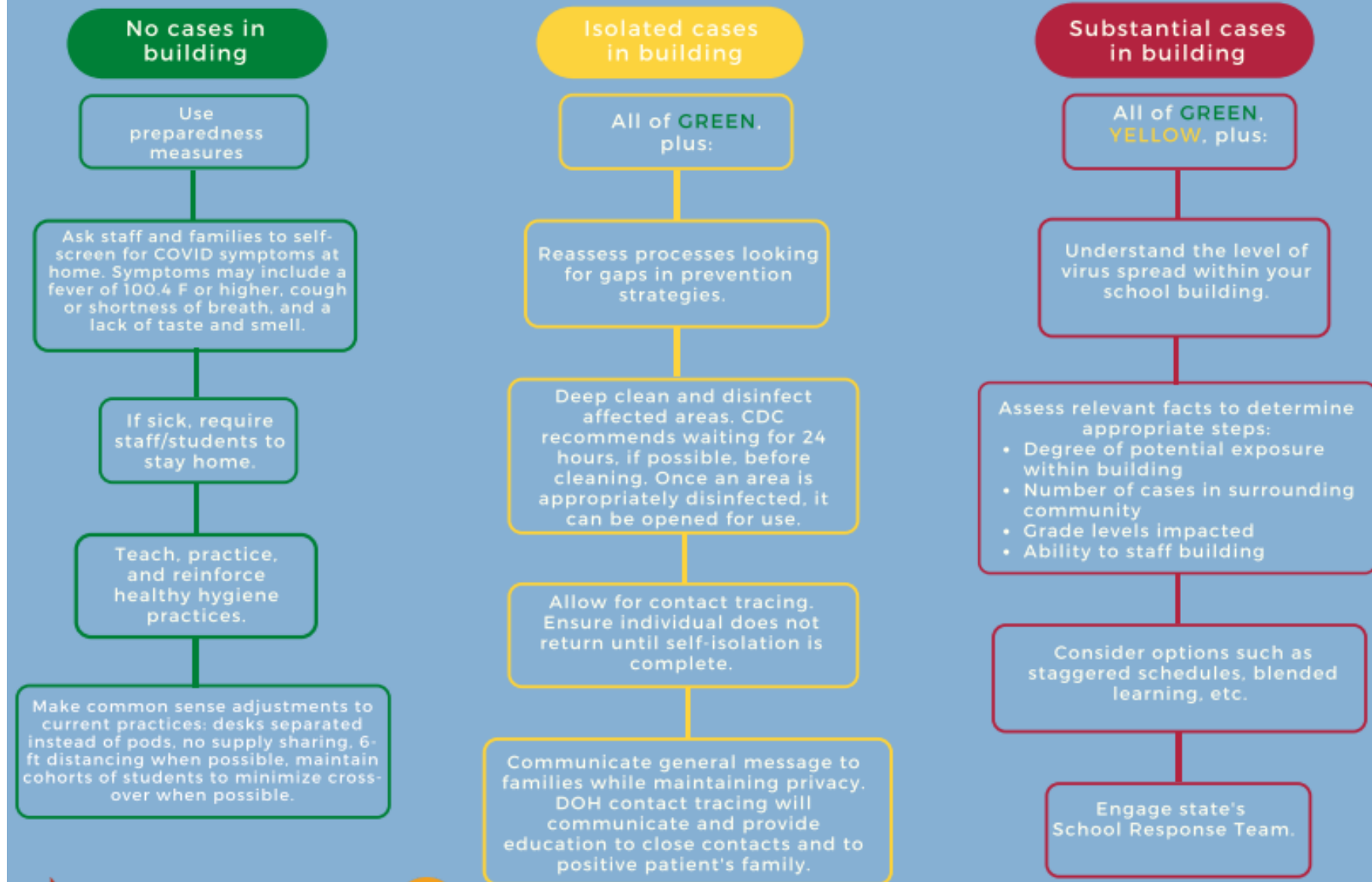
What grade levels will your child(ren) be in for the 2020-2021 school year? Check all that apply.

69 responses



COVID-19 Mitigation in Schools

Updated 7/6/20



What will happen if ...

A student or staff member is named as a close contact? (A close contact is defined as any individual who was within 6 feet of an infected person for at least 15 minutes starting from 2 days before illness onset.)

A DOH representative will contact all persons identified as close contacts (or the guardian if the contact is a minor.)

The close contact will be asked to quarantine for 14 days. This means to stay home, avoid contact with others, and not to share household items. Contacts will also be asked to monitor symptoms and temperature daily.

What if...

Updated 7/7/2020

A student or staff member tests positive for COVID-19.

A DOH representative will contact the positive patient (or the patient's guardian if the patient is a minor.)

The positive COVID patient:

- Will be asked to self-isolate for 10 days
- When possible the patient will be asked to use a separate bedroom, bathroom from others in the household
- Must be fever free without fever-reducing medication for 72 hours prior to release from isolation



STUDENTS

- Kept in grade level groups, as much as possible
- Masks are recommended but not required
- Minimize sharing of high touch materials
- Reorient desks to minimize students facing each other
- All-school assemblies will be eliminated. That information will be shared virtually.



BUILDINGS / EQUIPMENT

- All water fountains replaced with bottle fillers
- Signs will be posted
- Remove items that cannot be sanitized (i.e. bean bags, flexible seating)
- Windows open when possible
- Disinfectant sprayers ordered
- Mobile sanitation carts created
- Hand sanitizer stands placed around building
- Plexi-Glass for staff desks/areas
- Washer/Dryer purchased for janitorial/kitchen use with sani/steam options
- A/C in Aux. Gym
- A/C units (portable) for every staff member room



HS/MS CHALLENGES

- Electives – mixing grade levels
- Switching classes/crowded hallways
- Disinfecting rooms when students switch
- Focus on preventative measures (hand-washing, sanitizer, face-touching)



PREK-5 CHALLENGES

- Bathroom breaks scheduled by grade level
- Specials
- Recess (continued on the next slide)
- Disinfecting playground equipment
- Hugs, fives, free play, keeping social distancing



RECESS

- Keep grade levels together
- Divide playground into areas
- Individual play equipment for each grade level
- Staggered playground/recess times with grade level
- Covering with staff members



CAFETERIA

- Admin secretary will enter student numbers
- Tables spread out – possibly into lunchroom – or may be in classrooms
- Students sit with their class
- No salad bar
- Eliminate bottleneck when students are entering and leaving the cafeteria/gym areas. (Separate entrance/exit routes.)
- Stagger lunch times



VISITORS

- Appointment and pre-approved to enter the building by parents, vendors, etc.
- No visitors at lunch time
- Will be asked screening questions
- Will not be allowed to enter building from the west entrance waiting room



TRANSPORTATION

- Masks will be recommended for students on buses?
- Cleaning sprayers have been ordered
- Recommend sitting in family groups
- Sanitizers will be installed
- Windows open slightly
- Fill bus from back to front
- More buses for athletic events



PARENT RESPONSIBILITIES

- Screen students for symptoms in the morning (We will provide a checklist.)
- Open communication with the school
- Keep sick students at home
 - If students have a fever, they must stay home until the fever is gone for three days without medication.
 - If student tests positive for COVID, follow guidance of DOH before returning to school.



SICK STUDENTS AT SCHOOL

- **Follow I.C.E Protocol**

I – Isolate and Mask

C – Contact Parents Immediately

E – Exit school building ASAP

Secretary/school staff will wear PPE when in direct contact with possible sick student.



ATHLETICS

- **Waiting on information from SDHSAA**
 - **90/10 in favor of having Fall Sports**
- **Football Practice Starts – August 6**
- **Volleyball & Cross Country Practice Starts – August 13**
- **Summer workout sessions have went well overall – Phase 1 with Phase 2 implementations**



CLASSROOM INSTRUCTION

- It is our goal to have face-to-face instruction all year long. However, we will be prepared for flexible learning should the need arise.
- Time will be spent at the start of the school year focusing on:
- **RECOVER** – acclimate back to school, build relationships, share COVID stories, watch for mental health flags
- **ASSESS** – identify learning gaps, assess student levels, administer Interim Assessment, benchmark testing
- **ONBOARDING** – practice new procedures, familiarize students with digital tools and resources. Identify platforms that will be used at school and flexible learning, if needed.

